

### Advancing Environmental Management Practices & Threatened Species Recovery through Partnerships

#### Main achievements under Phase 1 (2016-2019)



Grande Soeur Island



Central Mahé Island



Sainte Anne Island

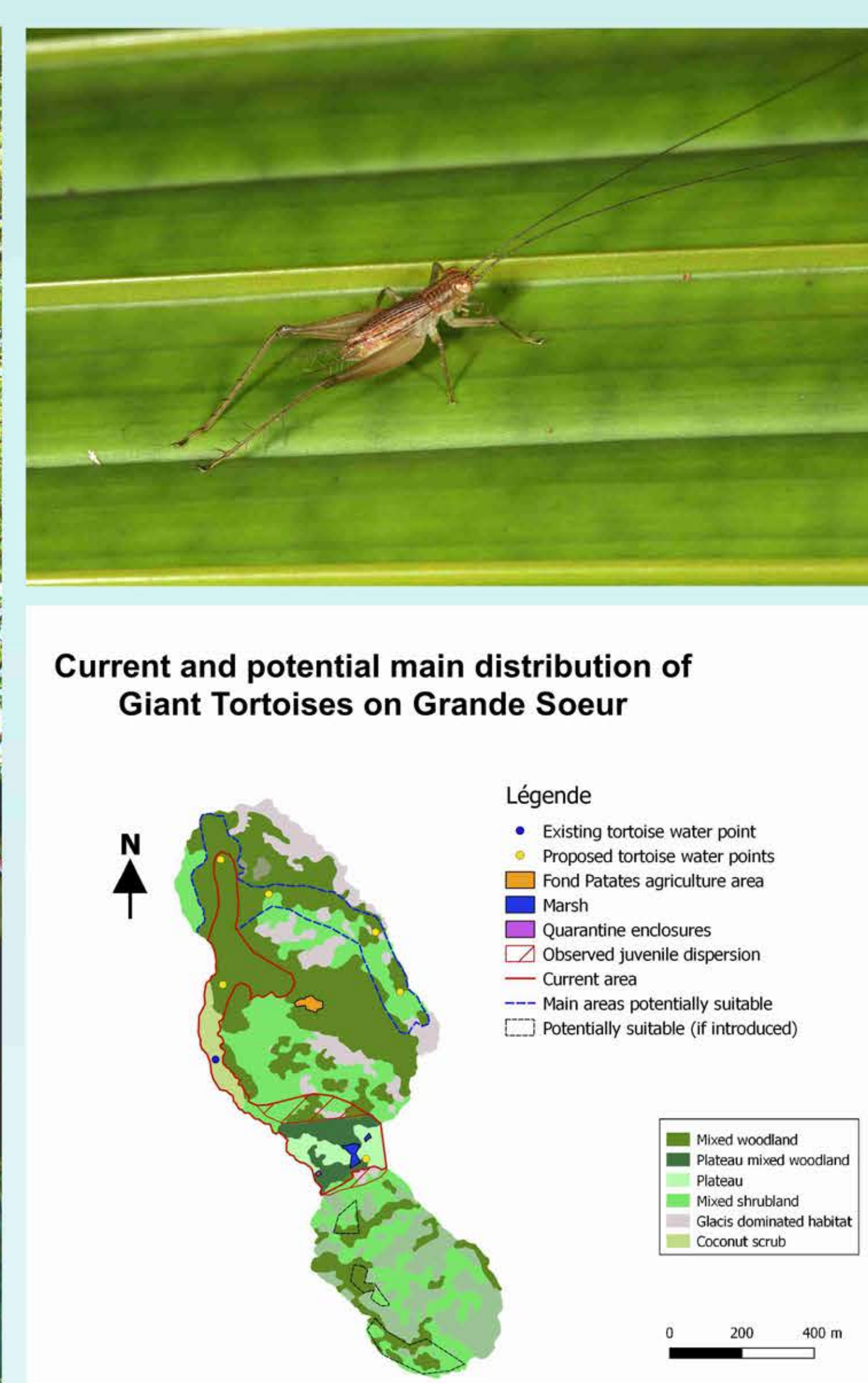
#### Capacity building:

- Bird ringing training course for 10 people on Aride Island Nature Reserve (Oct. 2017)
- Pesticide Handling and Applying training course at UniSey for 14 people (May 2017)
- Biosecurity workshop for 11 people on Ste Anne Island (March 2019)
- In-the-field training for 62 staff and volunteers in bird catching and ringing; vegetation multiplication and planting; bird / tortoise translocation and release; bird, plant and invertebrate monitoring etc.



#### Biodiversity monitoring and assessments

- Seychelles white-eye population sizes are on 5 different islands & breeding on Gde Soeur.
- All landbirds on Conception, Ile du Nord and Gde Soeur.
- Vegetation and invertebrates in Gde Soeur forests.
- Habitat suitability & safeguards assessments, and proposals to translocate Seychelles white-eyes and tortoises to Gde Soeur.



#### Working with communities.

- Planting native saplings at La Misère and Gde Soeur with school children, university students and local volunteers.
- Sensitisation to nature conservation with school children on Ste Anne.
- Meetings with residents, local authorities and school teachers to discuss rat control and Pest Management Plan for La Misère and Grand Anse.



#### Partners:

