

UniSey Centre for Innovation Ideas to Impact

The UniSey Centre for Innovation (UCI) is the University of Seychelles' platform for innovation, entrepreneurship, applied research, incubation, acceleration, and ecosystem development – turning Seychelles' ideas, talent, and ambition into real-world impact.

Explore UC

Work With U



UNIVERSITY OF
SEYCHELLES

UniSey Centre for Innovation

Ideas to Impact

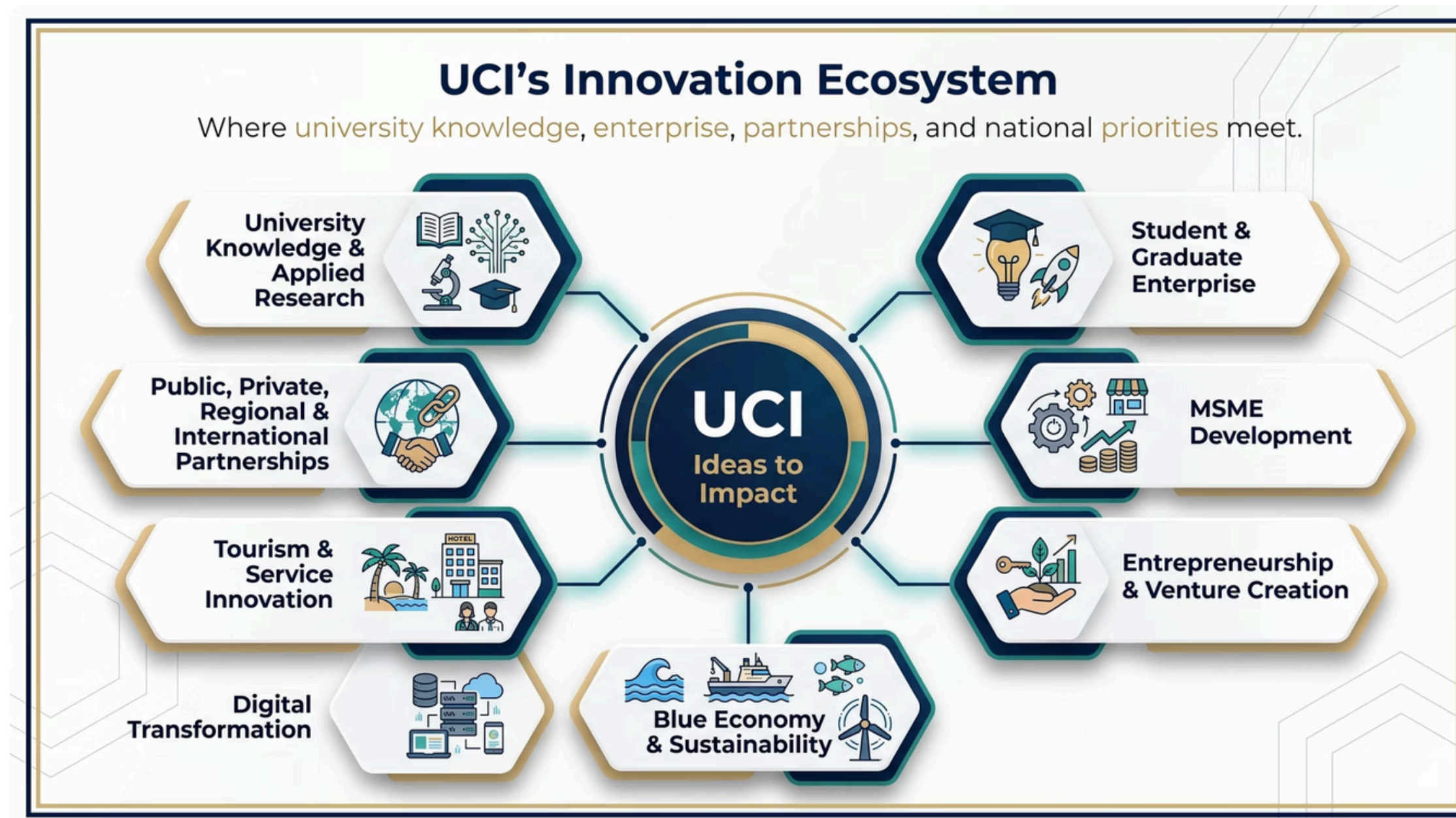


UNIVERSITY OF SEYCHELLES

About UCI

UCI is not simply an events unit or a physical space. It is a structured university-based innovation platform designed to connect learning, research, enterprise, mentorship, partnerships, and national development needs. The Centre supports innovation through guided programmes, practical training, mentoring, startup clinics, sector-focused challenges, partner engagement, and Demo Day-style pitch presentations. Its work is grounded in the realities of Seychelles as a small island state, where innovation must be practical, relevant, resource-conscious, and connected to real opportunities.

UCI is currently in its foundation and activation phase – building the systems, partnerships, programmes, advisory structures, and visibility needed to become a credible national platform for innovation.



Our Mission

To identify, develop, and accelerate high-potential ideas, founders, ventures, and applied innovation projects through structured programmes, practical mentorship, university knowledge, and ecosystem partnerships that support Seychelles' sustainable development.



Our Vision

To become Seychelles' leading university-based innovation, incubation, and acceleration platform, and a credible regional innovation node for the Western Indian Ocean.

Stronger Founders

Building the skills, confidence, and readiness of the next generation of Seychellois entrepreneurs and innovators.

Stronger Ventures

Supporting early-stage and growing ventures to validate, develop, and scale their ideas into real opportunities.

Applied Research Pathways

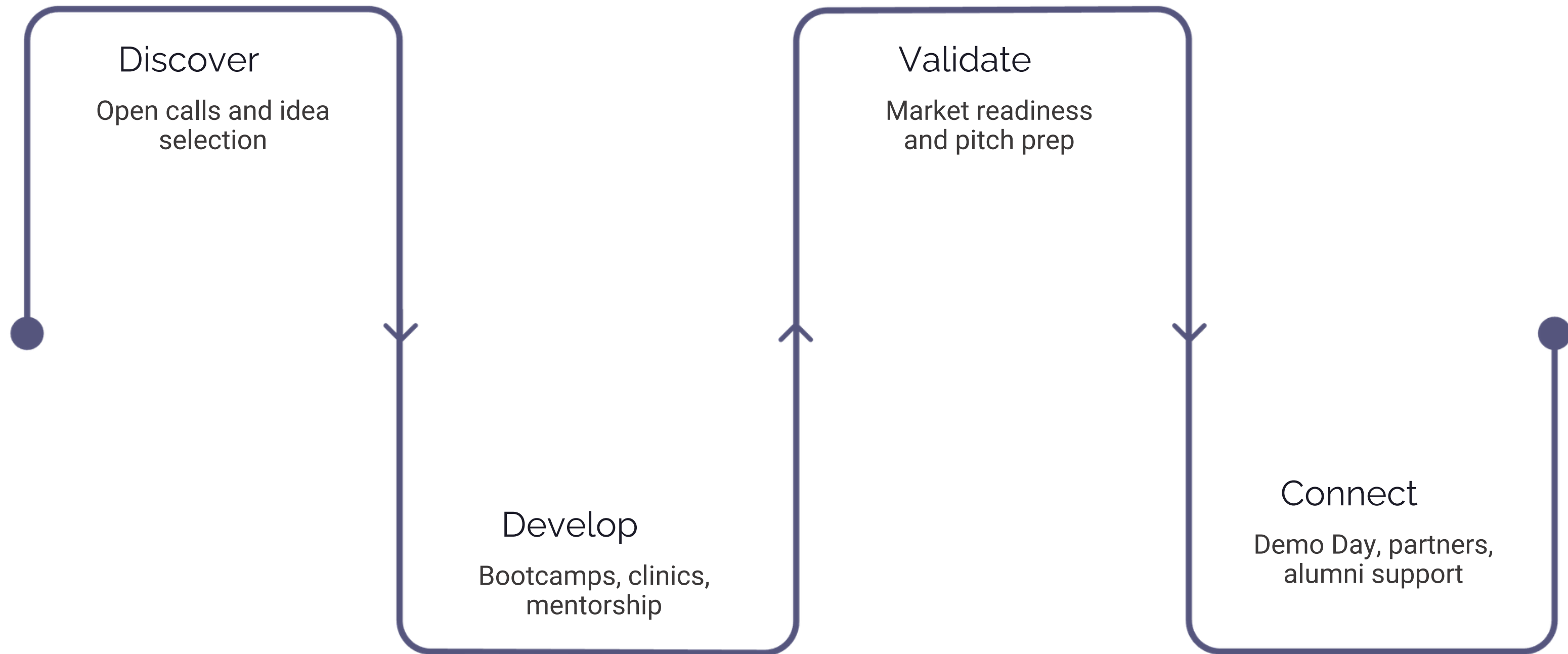
Connecting university knowledge to practical solutions and national development priorities.

Connected Ecosystem

Building a more integrated, visible, and collaborative innovation ecosystem for Seychelles.

What UCI Does

UCI supports the development of ideas and ventures through a structured pathway. The aim is not to deliver isolated workshops – it is to create a managed development process that helps participants move from early idea formation to validation, readiness, visibility, and practical opportunity.



This structured pathway ensures every participant receives consistent, purposeful support at each stage of their innovation journey – from the first spark of an idea through to real-world opportunity.

UCI as an Incubator and Accelerator

UCI operates as both an **incubator** and an **accelerator**, depending on the stage of the idea, project, or venture being supported. This dual role allows UCI to support both early idea development and venture-readiness progression within one structured university platform.

As an Incubator

UCI helps early-stage participants to:

- Clarify the problem they are trying to solve
- Develop ideas into more structured concepts
- Understand users, markets, communities, or institutional needs
- Test assumptions before major resources are committed
- Build basic business, project, or implementation models
- Strengthen confidence, discipline, and founder readiness

As an Accelerator

UCI helps more developed ventures and projects to:

- Refine their value proposition
- Validate demand, feasibility, and implementation potential
- Access mentors, technical experts, partners, and networks
- Prepare for pilots, customers, sponsorship, funding, or institutional uptake
- Strengthen pitch readiness and partner engagement
- Gain visibility through Demo Day-style pitch presentations

Who UCI Supports

UCI is designed to support a broad range of innovation actors. Innovation in Seychelles can come through technology, tourism, culture, food systems, environmental solutions, digital services, community enterprise, MSME upgrading, and applied research.



Students & Graduates

UniSey students with entrepreneurial or project ideas, and graduates seeking enterprise or innovation pathways.



MSMEs & Founders

Small businesses seeking to improve, formalise, digitise, or grow, and early-stage startup teams.



Researchers & Academic Staff

Those with applied knowledge or project concepts ready to move from research to real-world application.



Youth & Community Innovators

Youth innovators, community problem-solvers, and public and private sector partners seeking innovation collaboration.

Priority Areas

UCI's work is shaped by Seychelles' development realities as a small island economy. These six priority areas reflect the sectors where innovation can have the greatest practical impact.

Blue Economy & Ocean Innovation

Marine conservation, fisheries, aquaculture, coastal resilience, ocean enterprise, and circular economy solutions.

Sustainable Tourism & Cultural Enterprise

Tourism innovation, visitor experience, cultural tourism, creative products, community-based enterprise, and local value creation.

Climate, Sustainability & Circular Economy

Waste reduction, renewable energy, sustainable production, environmental services, climate adaptation, and resource efficiency.

Digital Services & Technology-Enabled Enterprise

Digital tools, AI-enabled services, e-commerce, education technology, productivity tools, and MSME digitalisation.

Food Systems & Local Production

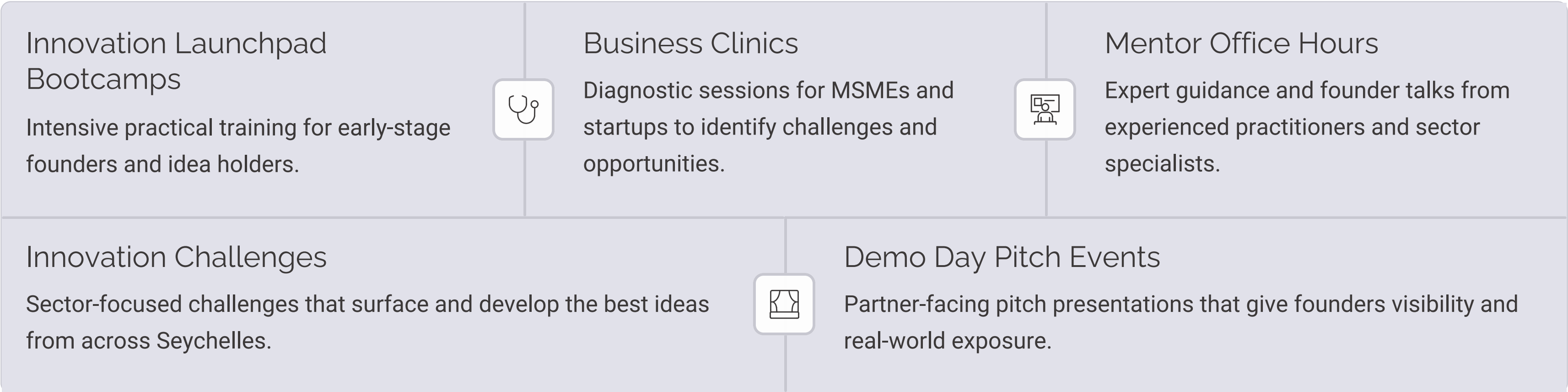
Agri-innovation, food security, local value chains, small-scale production, import substitution, and practical island food solutions.

Skills, Youth & Community Innovation

Employability, education, inclusion, social enterprise, community problem-solving, and youth-led innovation.

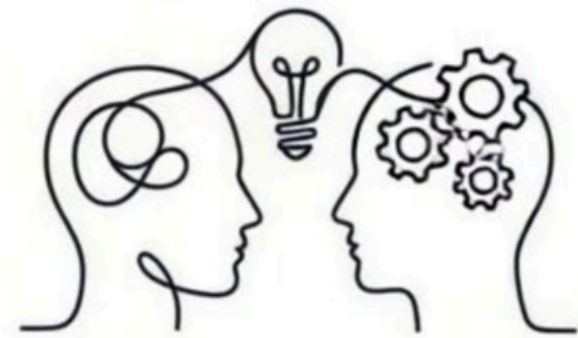
Programmes and Activities

UCI's early programme development includes a mix of practical training, founder support, ecosystem engagement, and visibility-building activities. As UCI grows, these activities will be organised into clearer incubation and acceleration pathways, with selected cohorts receiving structured support over a defined programme cycle.



Partnerships and Ecosystem Engagement

UCI is designed to work through partnerships. Its role is to connect the University with the wider innovation ecosystem – including government, public agencies, private sector actors, NGOs, regional organisations, international bodies, embassies, development partners, mentors, founders, and technical experts. UCI's partnership model is practical: partners are not viewed only as sponsors, but as contributors to founder development, applied innovation, and ecosystem growth.



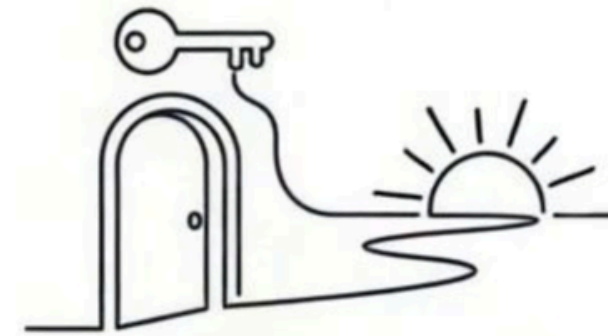
KNOWLEDGE

Mentorship, technical expertise, sector knowledge



FINANCIAL

Sponsorship, challenge sponsorship, grants



OPPORTUNITY

Pilot opportunities, founder referrals, Demo Day participation



CAPACITY

Training support, venues and in-kind support



VISIBILITY

Regional and international exposure, media



COLLABORATION

Research and policy collaboration, applied innovation

Advisory Board

UCI is supported by the development of a working Advisory Board – not designed as a ceremonial body, but as a practical source of strategic guidance, ecosystem intelligence, and real-world support.

Each member is expected to bring practical value through:

→ Expertise & Networks

Deep sector knowledge and connections that open doors for UCI and its founders.

→ Advice & Introductions

Strategic insight, partner referrals, and practical guidance for programme development.

→ Founder Support & Review

Direct engagement with founders, programme review, and accountability for the Centre's direction.

The Advisory Board will help UCI remain focused, accountable, relevant, and connected to Seychelles' innovation and development needs.



Current Stage of Development

FOUNDATION & ACTIVATION PHASE

UCI is currently building the structures required for long-term credibility and delivery. The Centre does not yet operate as a fully resourced innovation hub with a dedicated physical space. Its immediate strategy is to begin lean, build credibility, activate partners, deliver pilot activities, demonstrate value, and scale responsibly.

1

Operating Framework

Establishing the incubation and acceleration model and core operating systems.

2

Advisory Board

Recruiting and activating a working Advisory Board with practical expertise.

3

Partner Network

Building the partner and stakeholder network and grant mobilisation strategy.

4

Programme Concepts

Developing programme concepts, visibility materials, and monitoring tools.

Measuring Progress

UCI will track both activity and impact. Success will not be measured only by the number of events delivered – it will also be assessed through participant progress, founder readiness, partnerships activated, funding mobilised, stakeholder engagement, programme quality, and visible contribution to UniSey and Seychelles. This evidence-based approach will help UCI learn, improve, and demonstrate value over time.

Participant & Programme Metrics

- Number of participants trained or supported
- Bootcamps, clinics, and innovation programmes delivered
- Founders, MSMEs, students, graduates, and researchers engaged
- Participant satisfaction and feedback scores
- Innovation concepts or ventures supported
- Demo Day-style pitch participants

Ecosystem & Impact Metrics

- Partnerships and MOUs activated
- Grants and sponsorships pursued and secured
- Advisory Board engagement levels
- Media and regional visibility achieved
- Annual innovation impact reporting

Why UCI Matters

Innovation in Seychelles cannot depend only on individual effort, occasional funding, or disconnected initiatives. Seychelles needs structured pathways that help people develop ideas, test solutions, access expertise, connect with partners, and contribute to national priorities.

UCI gives UniSey a practical institutional mechanism to support that work. Through UCI, UniSey can play a stronger role in helping Seychelles move from potential to implementation.



Student & Graduate Development



Applied Research Engagement



Entrepreneurship & MSME Support



Innovation Capacity-Building



Regional & International Collaboration



Ecosystem Coordination

Work With UCI

UCI welcomes engagement from students, graduates, researchers, entrepreneurs, MSMEs, mentors, public agencies, private sector partners, NGOs, regional organisations, international bodies, and development partners. UCI's work is built on collaboration.



Join a Programme

Participate in a bootcamp, startup clinic, or innovation challenge and develop your idea with structured support.



Become a Mentor

Share your expertise as a mentor or expert speaker and help shape the next generation of Seychellois founders.



Partner With Us

Support an innovation challenge, sponsor a programme or Demo Day, or collaborate on applied research and sector-focused initiatives.

✔ Ready to get involved? UCI is open to all who share a commitment to building a stronger, more innovative Seychelles. **Ideas to Impact.**

Get Involve

Contact UC